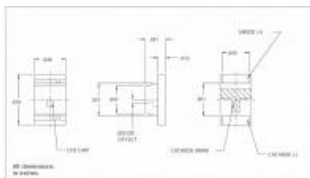




Products

LEDs

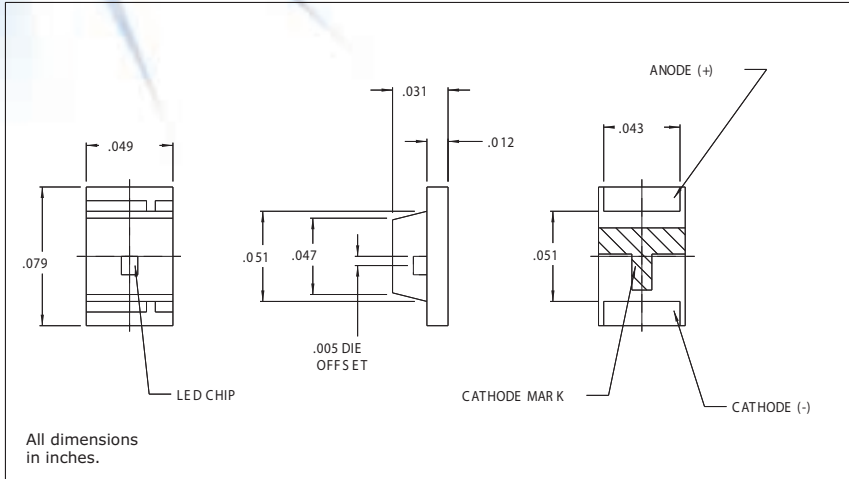
CML IT is a world leader in the manufacturing of LEDs and LED assemblies. CML offers a wide variety of products utilizing LEDs as a light source. Our line of discrete LEDs consists of both through hole and SMT products in all of the standard industry sizes including 3mm, 5mm, 0603, 0805, 1206, PLCC and any others. All CML-IT LEDs are available off-the-shelf in a wide variety of colors and intensities. Binning for through LEDs is one competitive service of CML Innovative Technologies, please contact us.



Part Number: 7012X5
Serial Number: 7012X
LED Type: SMT
Industry Size: 0805
Metric Size: 2.0 x 1.25 x 0.8 mm
Output Color: GREEN
Epoxy: CLEAR DIFFUSED
Peak Wave length (nm): 560
Minimum MCD: 3.8
Typical MCD: 6.4
Forward Volt (Typical): 2.1
Forward Volt (Max): 2.5
Rate Current (mA): 20
Viewing Angle (°): 120
Operating Temperature: -30 to +90
Storage Temperature:
Power Dissipation: 62.5
Cont Forward Current Max: 25
RoHS Status: Yes

7012X Series Bright★Chips™ High Brightness SMT LEDs 0805 Package Size

DESCRIPTION AND FEATURES



- Premium brightness in miniature chip-type LED assemblies.
- Ideally suited for applications such as telecommunications, dataprocessing peripherals and networking units as replacements for through-hole products.
- Also ideal for backlighting or light pipe applications.
- Compact size: 2mm wide x 1.25mm deep x 1mm high
- 4000 pieces per reel
- Integral reflection cup maximizes output
- Compatible with full range of IR and vapor phase reflow processes, and conductive adhesives, to facilitate high-speed board loading.
- Packaged for automatic component placement in pocketed anti-static tape reels.
- Solderpad geometry on page 1-X2.

ELECTRO-OPTICAL CHARACTERISTICS AND RATINGS

PART NUMBER	7012X13	7012X5	7012X1	7012X7
Output Color	Yellow	Green	Red	Yellow/Green
Diffusion	Diffused	Diffused	Diffused	Diffused
Package Color	Clear	Clear	Clear	Clear
Test Current (mA)	20	20	20	20
Forward Voltage Typ. (V)	2.2	2.1	1.7	2.1
Forward Voltage Max. (V)	2.5	2.5	2.0	2.5
Luminous Intensity Min. (mcd)	2.2	3.8	7.0	7.0
Luminous Intensity Typ. (mcd)	3.7	6.4	11.7	11.7
Luminous Intensity Max. (mcd)	-	-	-	-
Peak Wavelength (nm)	580	560	660	570
Viewing Angle 2θ 1/2 (degrees)	-	-	-	-
Power Dissipation (mW)	62.5	62.5	50	62.5
Operating Temperature (°C)	-40 to +85	-40 to +85	-40 to +85	-40 to +85
Storage Temperature (°C)	-40 to +90	-40 to +90	-40 to +90	-40 to +90
Peak Forward Current Max. (1µs @ 10% duty cycle) (mA)	60	60	60	60
Reverse Voltage (IR=100µA) (V)	4	4	4	4
Lead Solder Time @ 260°C	5	5	5	5